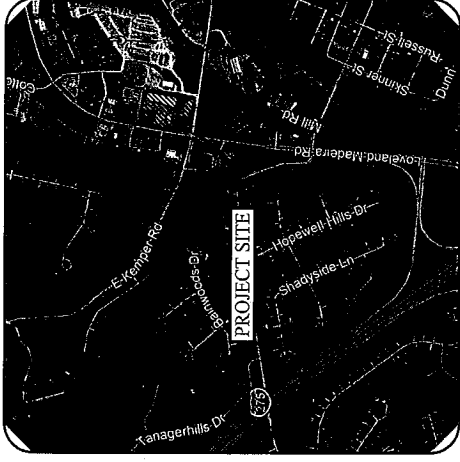


USGS MAP
SCALE 1"=1/4"

10554 LOVELAND MADEIRA ROAD

LOVELAND, SYMMES TOWNSHIP, HAMILTON COUNTY, OHIO
PROPOSED MINOR SUBDIVISION

PROPOSED MODIFICATION TO FINAL DEVELOPMENT
PLAN TO SYMMES TOWNSHIP ZONING COMMISSION



LOCATION MAP
SCALE 1"=20'

PREPARED FOR:

PARAGON MANAGEMENT GROUP, LLC

276 POST ROAD WEST, SUITE 201
WESTPORT, CONNECTICUT

PREPARED BY:



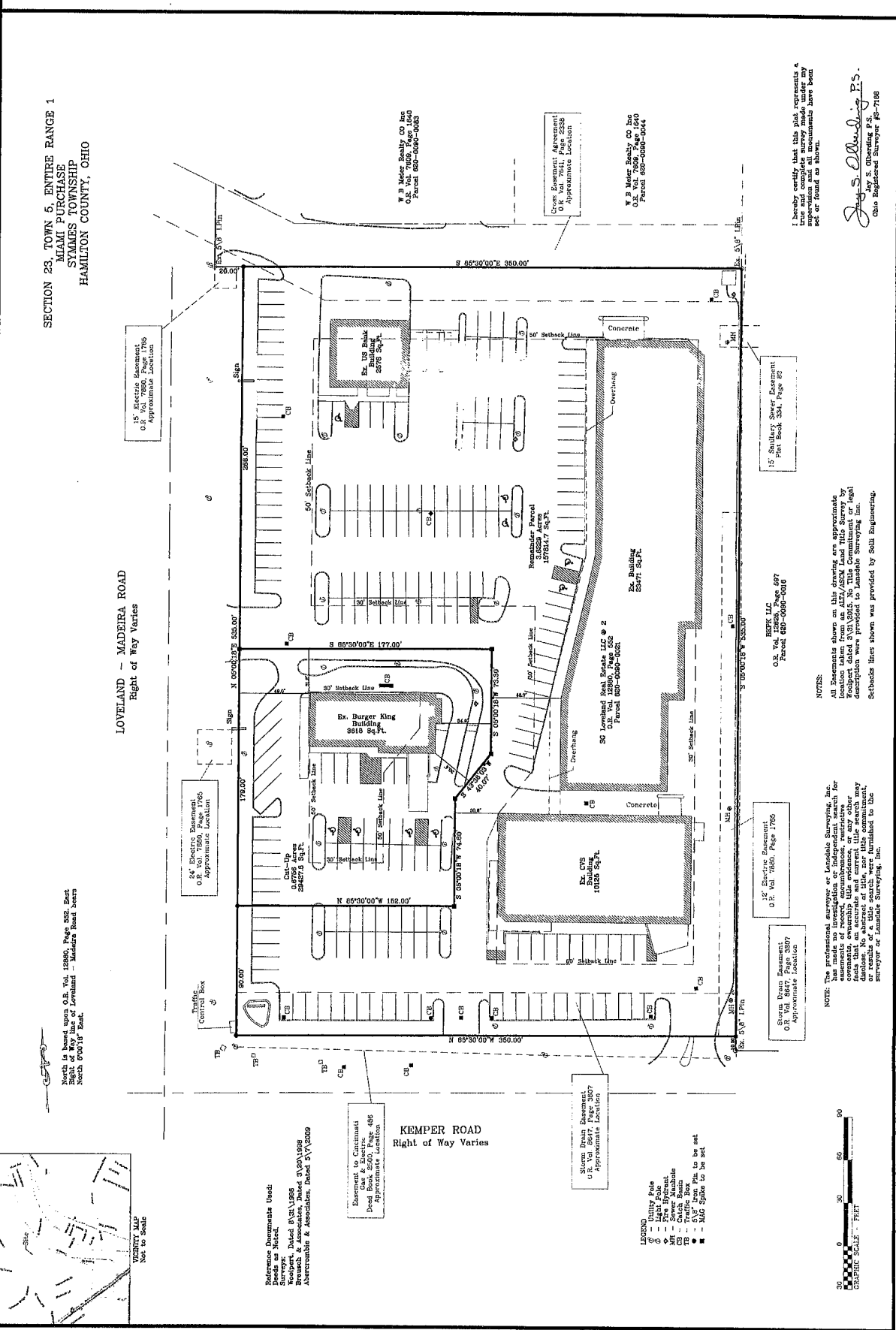
501 MAIN STREET, MONROE, CONNECTICUT 06468

DRAWING LIST

NO.	DATE	DESCRIPTION	BY	CHKD.
1	08/04/05	FINAL DEVELOPMENT PLAN	SKA	SKA
2	08/17/05	FINAL DEVELOPMENT PLAN	SKA	SKA

Rev. No.	Date	Description

Project:	MODIFICATION TO FINAL DEVELOPMENT PLAN
	10554 LOVELAND MADEIRA ROAD
	LOVELAND, OHIO
Sheet No.:	0.00
Sheet Title:	COVER SHEET

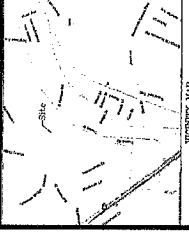


SECTION 23, TOWN 5, ENTIRE RANGE 1
 MIAMI PURCHASE
 SYMMES TOWNSHIP
 HAMILTON COUNTY, OHIO

LOVELAND - MADEIRA ROAD
 Right of Way Varies

KEMPER ROAD
 Right of Way Varies

North to West corner O.R. Vol. 12860, Page 535, East
 Right of Way Line of Loveland - Madeira Road shown
 North 0°00'15" East.



LOCATION MAP
 Not to Scale

Reference Documents Used:
 Deeds as Noted.
 Survey: Dated 8/31/1988
 Branch & Associates, Traced 3/20/1989
 Abernethy & Associates, Dated 5/1/2009

Easement to Cincinnati
 Dred Bank 2-00, Page 486
 Approximate Location

Storm Drain Easement
 O.R. Vol. 12867, Page 3807
 Approximate Location

- LEGEND
- Utility Pole
 - Light Pole
 - Manhole
 - Storm Manhole
 - Catch Basin
 - 5/8" Iron Pin to be set
 - 1/2" Iron Pin to be set



NOTE:
 All Easements shown on this plat are approximate
 locations taken from an AIA/ASAM field trip survey by
 Woodport dated 3/31/2015. No Title Commitment or legal
 description were provided to Lansdale Surveying Inc.
 Setbacks listed shown was provided by Soil Engineering.

24' Electric Easement
 O.R. Vol. 17560, Page 1756
 Approximate Location

22' Electric Easement
 O.R. Vol. 17560, Page 1756
 Approximate Location

Storm Drain Easement
 O.R. Vol. 12867, Page 3807
 Approximate Location

15' Sewer Easement
 Plat Book 334, Page 82

Y. B. Mader Realty, CO, Inc.
 O.R. Vol. 7628, Page 1200
 Parcel 620-0080-0083

Cross Easement Agreement
 O.R. Vol. 7641, Page 2232
 Approximate Location

Y. B. Mader Realty, CO, Inc.
 O.R. Vol. 7609, Page 1240
 Parcel 620-0080-0044

I hereby certify that this plat represents a
 true and complete survey made under my
 seal and in accordance with the provisions
 set or found as shown.

James A. Lansdale, P.S.
 Ohio Registered Surveyor 85-7188

